



ASBURY  
PARK

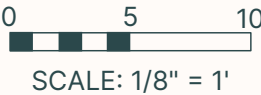
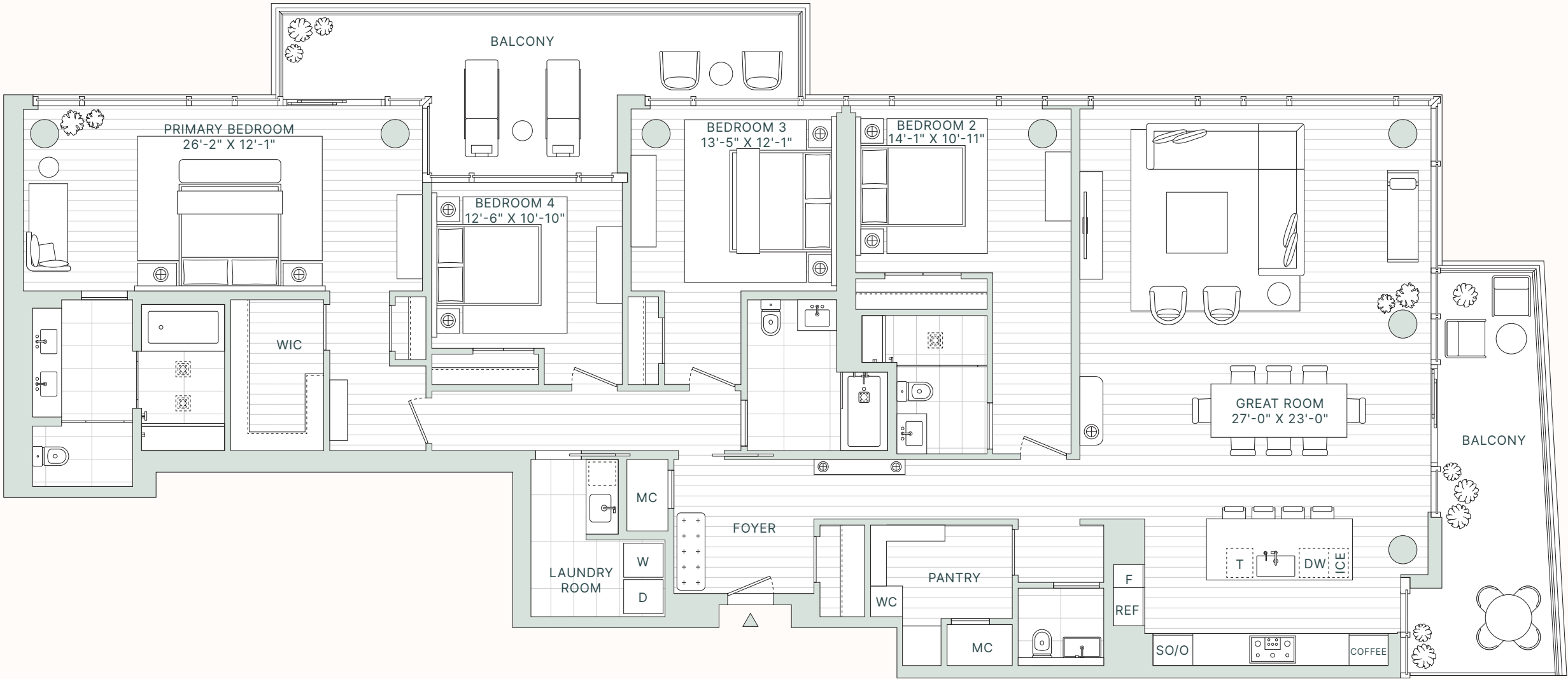
# RESIDENCE 811

PRIVATE PARK  
& EAST EXPOSURE  
4 BEDROOMS  
3 BATHROOMS  
POWDER ROOM  
BALCONIES

INTERIOR:  
2,776 SQ FT  
258 SQ M  
EXTERIOR:  
480 SQ FT  
45 SQ M



SOUTH TOWER



Units or interests in the Condominium are offered for sale to the public without discrimination based on marital status, sex, race, color, creed, religion, national origin, ancestry, affectional or sexual orientation, or any other characteristic protected under the New Jersey Law Against Discrimination (N.J.S.A. 10:5-1 et seq.). All renderings, descriptions, and depictions of the building, units, interior finishes, furnishings, appliances, and exterior views are for illustrative purposes only and are subject to change. The complete terms of the offering are outlined in the Public Offering Statement, available from the Sponsor. The Sponsor reserves the right to make modifications in accordance with that statement. Prospective buyers should consult the Public Offering Statement for full details regarding materials, appliances, equipment, and fixtures included in units, amenity areas, and common elements. No representations or warranties are made by the Sponsor except as expressly stated in the Public Offering Statement. Buyers acknowledge that they are relying solely on the terms set forth in the Public Offering Statement. It should be noted that any model may include options and extras that are available at an additional cost. Changes may be made to landscaping, appliances, heating, air conditioning, electrical or plumbing systems without notice. All content, images, and graphics are the property of the Sponsor.

Sponsor: Somerset Asbury Park Urban Renewal LLC Exclusive Sales & Marketing Agent: Corcoran Sunshine

INSPIRED  
BY SOMERSET DEVELOPMENT

corcoran sunshine